

SAVE TIME
to partially empty the Big bags.



VID BAG

VID
BAG®



Simple and fast use
• High resistant to corrosion
• Made in Polyamide 6



FILL CORN

FILL
CORN®



Adaptor for Vidbag and Cone-R bag

- For the uniform filling of containers such seeders, wheelbarrows...
- It can be used with rigid and flexible hose * (ringed or not)
* not supplied hose



CONE-R BAG

cone-R
BAG®

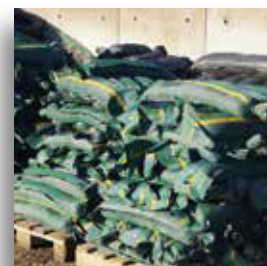


Drain valve to partially empty
Big bags with hose. For seeds, animal food,
pellets...



FILL SILOBAG

FILL
SILOBAG®



Adaptor to Vidbag

- Easier and faster
- To fill silobags with round gravel



BAG



MODULO
BAG®



MODULO BAG



Technical Data :

- capacity: 1250 kg
- size : 1190x1130x1530 mm
- height under FUNNEL-BAG with cylindre : 897 mm, with peak : 1250 mm
- width between tube : 1070 mm
- weight main unit: 68 kg
- weight extension: 47 kg
- Made of polyamide 6 foods contact for table and Funnel-Bag with cylindre or peak and galvanized steel for feet and reinforcements.

Adaptable for Bigbag with hoses or flat bottom

- Extensible tables from a central modul.
- Made of polyamide (no corrosion and cleaning easy) and galvanized steel frame.